

GAME OF TIGERS (PLUS)

BHIGWAN-TADOBA-PENCH-RANTHAMBHORE - JHALANA

(14NIGHTS/15DAYS)Dec-Jan(2025-26) Dates are flexible*

ITINERARY



Guided Wildlife Exploration with Local Expert Pradeep

Join Pradeep, a passionate local expert, on a wildlife adventure curated specifically for U.S. travelers. With a deep understanding of your expectations, he'll guide you through India's most iconic wildlife, from majestic tigers and leopards to exotic mammals, owls, and vibrant birds, ensuring an unforgettable experience.





ABOUT BHIGWAN BIRD SANCTUARY

Nestled on the tranquil backwaters of the Ujjani Dam and often celebrated as the “Bharatpur of Maharashtra,” the Bhigwan Bird Sanctuary invites nature lovers and birding enthusiasts alike. This sanctuary, with its diverse avian population, comes alive with the fluttering of wings and the calls of the wild, as migratory and resident birds grace the waters and shores.

Bhigwan’s diverse habitats are a haven for wildlife enthusiasts, offering sightings of owls, jungle cats, foxes, wolves, and jackals amidst its marshlands and grasslands. The sanctuary is also home to various raptors gliding overhead, adding an element of excitement to any visit. This rich ecosystem provides a unique opportunity to experience the interplay of avian life and land predators in their natural environment.

Wildlife Type	Commonly Sighted	Occasionally Spotted	Rarely Spotted
Owls	Indian Eagle Owl Mottled Wood Owl Spotted Owlet	Brown Fish Owl	Short-eared Owl Barn Owl
Mammals	Indian Wolf Jungle Cat Golden Jackal	Striped hyena Indian Fox	Small Indian Civet Leopard



ABOUT TADOBA NATIONAL PARK

Lending it's name from the Marathi local God Tadu and the glistening Andhari river flowing through the land, the Tadoba Andhari Tiger Reserve in Maharashtra stands hosting the largest number of mighty tigers in the country.

The Tadoba Andhari National Park features a tropical and dry deciduous topography with scrawny bamboo forests spanning over the landscape. The long and seemingly endless stretches of charcoal-tinted tar roads in Tadoba make for an excellent centre stage for the ferocious tigers to emerge and make their bold appearances. Tourists and photographers alike, flock to Tadoba to capture stellar frames that encapsulate the mesmerizing polarity of the golden hues of tigers and the pitch black tar roads.

To experience the mesmerizing beauty of Tadoba, one needs to cover all three zones that it is spread over— Mohurli, Tadoba, and Kolsa. Safaris can access the Tadoba and Mohurli zones at once, however, you have to take a separate route, jeep, tickets and permits for Kolsa.



ABOUT TADOBA NATIONAL PARK

While you are galavanting on your jeeps do not miss out on delegating some of your time on the buffer zones. Tadoba is one of the very few national parks in India where tiger sightings are abundant in the buffer zones with even a solid number of joyful cubs playing around. Devada, Agarzari, Junona, Sirkheda, Alianza, and Belara are especially famous buffer zones for tiger sightings.

Tadoba does have the fastest-growing tiger population in India, but that's not all that the national park has to offer. The four VIP attractions of Tadoba are leopards, sloth bears, dholes (wild dogs), and tigers. Sauntering along the beautiful Jamni lake or the Tadoba lake you can also spot a lot of herbivores including deer. Since 2019 Tadoba has been graced by the presence of a very special guest, the semi melanistic Black Panther. Bring out your lucky charms to your safari because spotting the panther in the core zone will require some luck on your side.

Taste the thrill of chasing the most coveted tiger frames in the world, visit Tadoba!





ABOUT PENCH NATIONAL PARK

Nestled in the heart of Madhya Pradesh, Pench National Park is where wilderness and legend entwine. Known as the land of **The Jungle Book**, its ancient forests and rolling grasslands echo with tales as old as time. The park, divided by the serene **Pench River**, offers a landscape rich in color—from the golden morning light on Amaltas blooms to the emerald shade beneath towering **Mahua** and White Kulu trees.

Pench is a vibrant tapestry of life. Here, the **Bengal tiger** reigns supreme, silently prowling through dense groves and sunlit clearings. Alongside the great cats, **leopards**, wild dogs, and the elusive Indian wolf roam, each creature bringing its own rhythm to this living symphony. Gaur, chital, and four-horned antelope graze gracefully, adding to the park's timeless charm. A paradise for bird lovers, Pench is alive with the bright flashes of **Indian Rollers**, the calls of peafowl, and the rare sightings of the Crimson-breasted Barbet. Waterfowl grace the riverbanks, while **blue kingfishers** dive into the Pench's sparkling waters, their wings glinting in the sun.

You'll find yourself spellbound, immersed in a realm where **Kipling's world comes alive**—a place that, with each step, reveals stories of survival, beauty, and wonder.





ABOUT RANTHAMBHORE NATIONAL PARK

Ranthambhore National Park, located in Rajasthan's Sawai Madhopur district, is a renowned wildlife destination spread across 392 sq. km.

The park's landscape is dominated by dry deciduous forests, with the **Dhonk tree** (*Anogeissus pendula*) being the most prevalent species, forming the largest stretch of this forest type in India.

Known for its thriving population of **Bengal tigers**, the park offers an ideal setting for spotting these majestic creatures, thanks to its dry deciduous forests and open meadows. Rich in biodiversity, Ranthambhore also boasts over 40 species of mammals and 320 species of birds.

The park's **unique blend of nature and history** includes the 10th-century **Ranthambhore Fort**, perched atop a hill, and ancient temples nestled within. This captivating mix of wildlife and historic ruins makes Ranthambhore a prime destination for both nature enthusiasts and history lovers.





Mammals to Expect

Mammals	Commonly Spotted	Occasionally Spotted	Rarely Spotted
Tigers (main attraction)	All three reserves	-	-
Leopard	-	All three reserves	-
Sloth Bear	Tadoba, Pench	Ranthambore	-
Wild Boar	All three reserves		-
Indian Gaur	Tadoba, Pench	Ranthambore	-
Chital (Spotted Deer)	All three reserves	-	-
Sambar Deer	All three reserves	-	-
Nilgai (Blue Bull)	Ranthambore	Tadoba	
Indian Wolf	-	-	Pench, Tadoba
Striped Hyena	-	Ranthambore	
Rusty-spotted Cat	-	-	All three reserves
Jungle Cat	-	-	-
Indian Jackal	All three reserves	-	-
Hanuman Langur	Yes (all three reserves)	-	-



<i>Owls and Birds to Expect</i>			
Owl/Bird Name	Commonly Spotted	Occasionally Spotted	Rarely Spotted
Owls:	Spotted Owlet	Indian Scops Owl	Mottled Wood Owl
	Jungle Owlet	Tawny Fish Owl	Indian Eagle Owl
	Brown Fish Owl	-	-
Bird Species:	-----	-----	-----
	Indian Peafowl	Oriental Honey Buzzard	Painted Sandgrouse
	Rufous Treepie	Red-vented Bulbul	Yellow-crowned Woodpecker
	Common Kingfisher	Paradise Flycatcher	Rufous Woodpecker
	Rose-ringed Parakeet	Malabar Pied Hornbill	Stork-billed Kingfisher
	Green Bee-eater	White-throated Kingfisher	Golden Oriole
	Indian Roller	Pied Kingfisher	Greater Flameback
	Crested Serpent Eagle	Black-capped Kingfisher	Pygmy Woodpecker
	Indian Pitta	Long-billed Vulture	Purple Sunbird

DAY 1 – (TADOBA)

- Arrive Nagpur airport by 9:00am and drive down to Tadoba after a quick breakfast in Nagpur (approx 2 hrs drive). Reach Tadoba by 11:30 am.
- Checkin, freshen up and have quick lunch. We do a brief introduction over lunch and prepare for our maiden safari.
- Embark on afternoon safari. Return to the hotel, freshen up, rest, have dinner and call it a night

DAY 2 TO 4 – (TADOBA)

- **Morning & Afternoon Safaris:** Dive into the prime tiger zones of Tadoba, capturing majestic wildlife moments.
- Enjoy Breakfast, Lunch, Hi-Tea, and Dinner at the hotel between safaris.

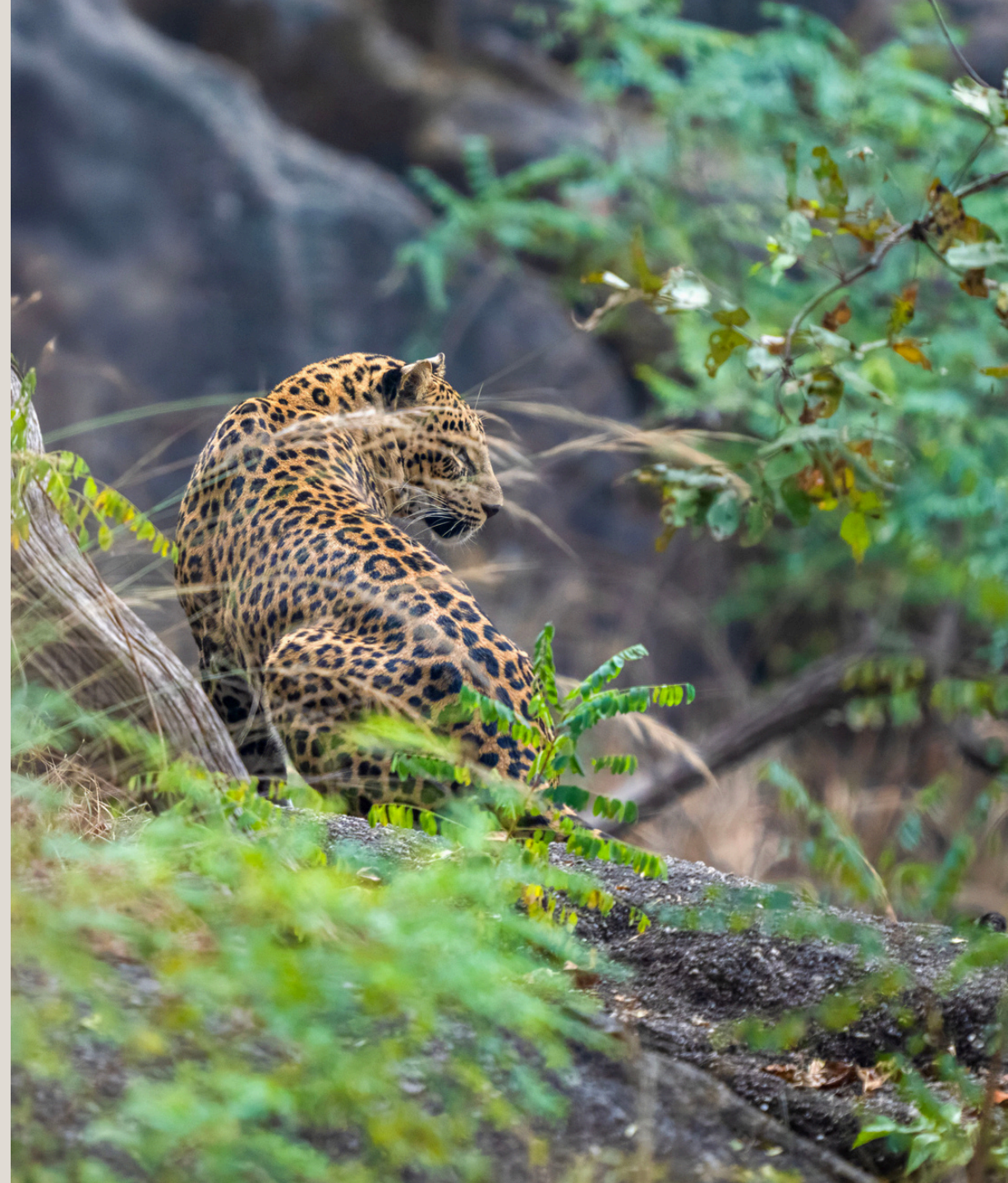


DAY 5 – (PENCH)

- Breakfast at the hotel in Tadoba. Freshen up and we checkout by 9 am
- Drive down to Pench which is nearly a 3.5 hour drive and we hope to reach Pench by 12:30 pm.
- Have quick lunch and we go for afternoon safari in Pench. Return to the hotel, freshen up, rest, have dinner and call it a night.

DAY 6 – (PENCH)

- **Morning & Afternoon Safaris:** Dive into the prime Leopard zone of Pench, capturing majestic wildlife moments.
- Enjoy Breakfast, Lunch, Hi-Tea, and Dinner at the hotel between safaris.



DAY 7 – (TRANSITION)

- Take a train from Nagpur to Sawaimadhopur (Train departure time - 11:10 am and train arrival time - 4:05 am).

DAY 8 – (RANTHAMBHORE)

- Drive from Sawaimadhopur station to Regency hotel (nearly 10 minutes drive).
- Check in at the hotel (Ranthambhore Regency) and rest. Have breakfast as per your convenience.
- Have lunch at the hotel. Embark on afternoon safari in Ranthambhore. Return to the hotel and enjoy hi-tea
- Rest, freshen up dinner and call it a night.



DAY 9 & 10 – (RANTHAMBHORE)

- Morning & Afternoon Safaris:** Dive into the prime tiger zones of Ranthambhore, capturing majestic wildlife moments.
- Enjoy Breakfast, Lunch, Hi-Tea, and Dinner at the hotel between safaris.

DAY 11 – (FINAL SAFARI & TRANSITION)

- Final morning safari in Ranthambhore. Checkout around noon, post breakfast.
- Depart for Jaipur airport in comfortable SUVs

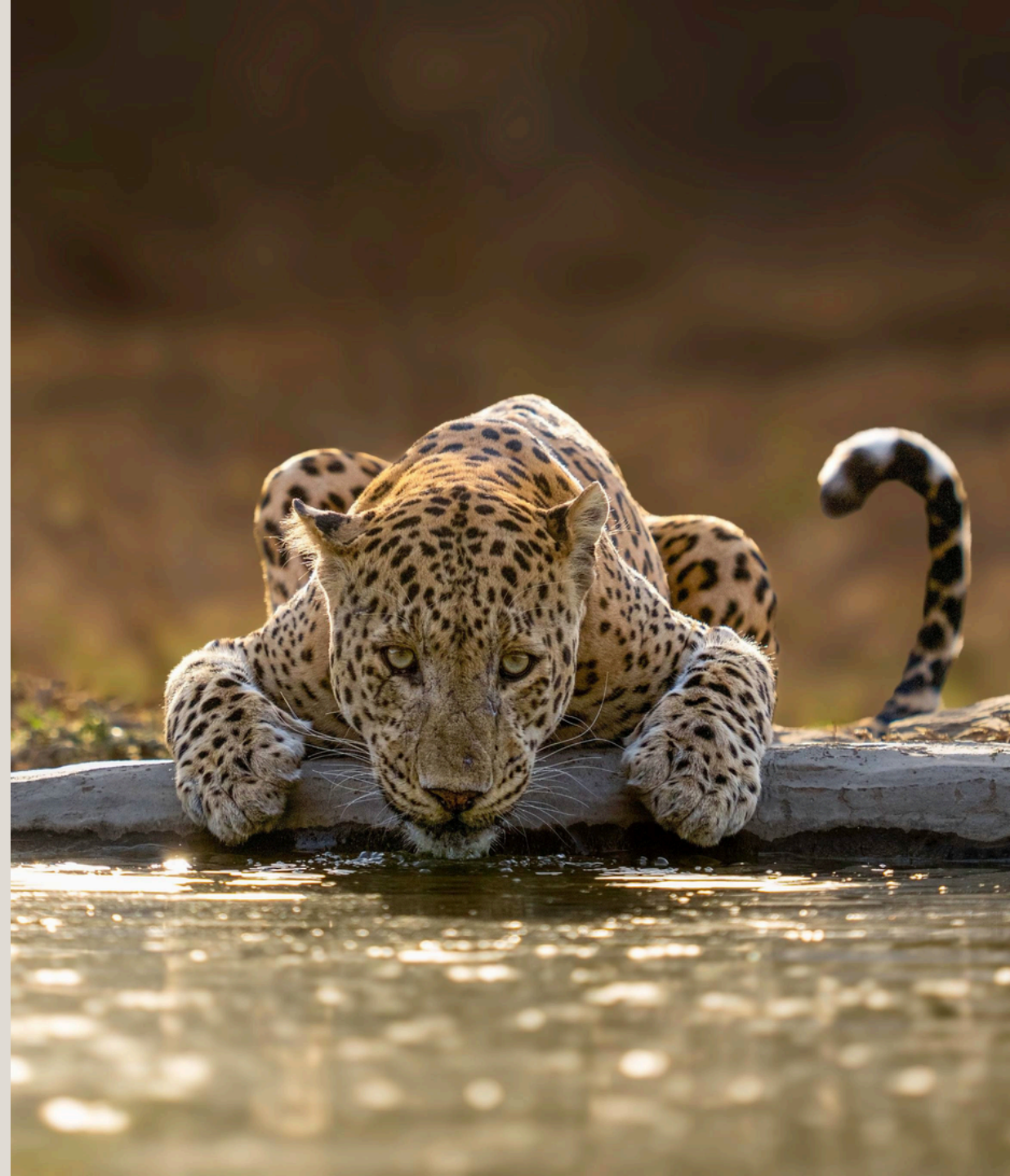


DAY 11 – (Jaipur)

- **Morning & Afternoon Safaris:** Dive back from Ranthambore to Jaipur, Check-in at Hotel and rest for few hours.
- In the evening, head out to explore the famous forts and stroll through the local markets to experience the rich cultural diversity

DAY 12 – (FINAL SAFARIS & TRANSITION)

- Final morning and evening safaris in JHALANA.
- Checkout around noon, post breakfast and keep the luggages at hotel locker room and can pickup after evening Safari.
- Depart for Jaipur airport in comfortable SUVs, concluding our incredible wildlife tour.



DAY 13 – (BHIGWAN)

- Arrive **PUNE** airport and rest that **night of 12th day** in hotel at Pune
- **by 8:00am** and drive down to BHIGWAN after a quick breakfast in PUNE (approx 4 hrs drive). Reach BHIGWAN.
- Check in, freshen up and have quick lunch. We do a brief introduction over lunch and prepare for our maiden safari for Owls and Wolves.
- Embark on **afternoon safari**. Return to the Home Stay, freshen up, rest, have dinner and get ready for Night Safari.
- **Night safari** to explore and search for elusive nocturnal wildlife.

DAY 14 – (BHIGWAN)

- **Full Day Safaris:** Dive into the grasslands of BHIGWAN to search for Owls, Wolves, Bengal Foxes, Hynas, and other raptors.
- Enjoy Breakfast, Lunch, Hi-Tea, and Dinner at the hotel/ On the go between safaris.
- Drive back to PUNE after evening Safari and check in to **hotel near airport**

DAY 15 – (BHIGWAN) and exit

- Drive back to PUNE after Morning Safari and catch your international flights. Good Bye!





HOW TO PACK FOR A WILDLIFE PHOTOGRAPHY TOUR

- **Documents:** Carry essential documents like passport and visa (for foreign travelers).
- **Camera Gear:** Bring two compatible cameras for flexibility and security. One can focus on high resolution, while the other prioritizes speed.
- You can ideally carry two or more lenses but make sure you are not travelling overweight. One would be a long focal length prime (like a 300mm/400mm 2.8/ 600mm f4) or a telephoto lens like (180-600/200-600/100-500). The other should be a 70-200mm or 135mm f 1.8 if you're a prime lover and want to capture environmental portraits of subjects with a very shallow depth of field.
- The third lens can be a wide angle lens for your landscape shots as well night photography (if any).
- **Batteries:** Pack extra batteries, chargers (preferably multi-port), USB charging options.



HOW TO PACK FOR A WILDLIFE PHOTOGRAPHY TOUR

- **Backup Devices:** Bring a laptop, tablet, or portable SSD to back up your photos and ensure the safety of your precious captures during the trip.
- **Clothing:** Lightweight cotton pants; Long-sleeve cotton/ linen shirt/t-shirt (comfortable fitting); Neck Buff / headband / bandana; Hat/ cap; For winter safaris -light jacket, woolen gloves, woolen socks, inner body thermals, 2 pairs of each (Winter mornings in India are very cold and you will find these items of great value.); Swimsuit and coverup; Casual wear; Nightwear; Undergarments and socks
- **Footwear:** Opt for comfortable, closed-toe shoes for safaris. Flipflops/ floaters for safaris.
- **Color guide:** Avoid packing flashy colours (red, yellow etc). Instead opt for neutral colours like khaki, tan/ brown, military green etc.
- **Personal medications:** In case you have a medical condition, please do carry your personal medications.





PACKAGE VALUE & CANCELLATION POLICY

Option 1: USD 6,200 plus GST@5% per person (14 days with choice of guide and driver, covering Tigers, Leopards, Owls, and Wolves)

Option 2: USD 5,200 plus GST@5% per person (12 days with choice of guide and driver, covering Tigers and Leopards)

Option 3: USD 4,800 plus GST@5% per person (11 days with choice of guide and driver, covering Tigers-Plus)

Cancellation Policy\$:

1. Cancellation 30 Days or More Before Trip Start Date:

- If you cancel 30 days or more prior to the trip start date, 30% of package value# will be deducted.
- If at the time of cancellation, permits are available and you provide us with a replacement participant, then the balance 70% of package value can be converted into a credit note. This credit note can be used for future safari bookings with Wildscappe Expeditions (for the next 1 year from date of original booking)

\$The date of email communication (sent on tours@wildcatodyssey.com) with the intent to cancel shall be considered as the relevant date for calculating the cancellation charges/refund.

#Since safari permits once booked are non-transferable and non-refundable. This is sadly not under our control as its the forest departments rule in India and hence the strict cancellation policy.



PACKAGE VALUE & CANCELLATION POLICY

2.Cancellation Less Than 30 Days Before Trip Start Date:

- If you cancel less than 30 days prior to the trip start date, 50% of package value# will be deducted.
- If at the time of cancellation, permits are available and you provide us with a replacement participant, then the balance 50% of package value can be converted into a credit note. This credit note can be used for future safari bookings with Wildscapce Expeditions (for the next 1 year from date of original booking)

\$The date of email communication (sent on tours@wildcatodyssey.com) with the intent to cancel shall be considered as the relevant date for calculating the cancellation charges/refund.

#Since safari permits once booked are non-transferable and non-refundable. This is sadly not under our control as its the forest departments rule in India and hence the strict cancellation policy.





TOUR INCLUSIONS

- No. of participants:** 6 participants (Foreign nationals). •**No. of safaris:** 16 (7 in Tadoba, 3 in Pench and 6 in Ranthambhore) •**Accommodation:** Stay for 4 Nights in Tadoba, Stay for 2 Nights in Pench and 4 nights in Ranthambhore. Two rooms on twin sharing.
- Meals:** All meals as per itinerary from lunch of day 1 to breakfast of day 11
- Transfers:** Gate transfers. All internal transportation from Nagpur airport to Tadoba, Tadoba to Pench, Sawaimadhopur station to Ranthambhore and back to Jaipur airport.
- Train travel:** From Nagpur to Sawaimadhopur in a comfortable AC (first tier) coach
- Entry fee:** All safari permits and parks entry fee



TOUR EXCLUSIONS

- Your travel up to Nagpur and from Jaipur.
- Any extra F&B, laundry charges, drinks of personal nature, etc.
- Tips and gratuities to the drivers/guides/staff
- Anything else not included in the 'INCLUSIONS' section of the itinerary.



