

ITINERARY

# THE TIGER QUEST

*Discover India's Wild Heart with Pradeep*

## RANTHAMBHORE AND BANDHAVGARH

*(9 Nights/10 Days)*

Join Pradeep, a passionate local expert, on a wildlife adventure curated specifically for U.S. travelers. With a deep understanding of your expectations, he'll guide you through India's most iconic wildlife, from majestic tigers and leopards to exotic mammals, owls, and vibrant birds, ensuring an unforgettable experience.









# ABOUT RANTHAMBHORE NATIONAL PARK

Ranthambhore National Park, located in Rajasthan's Sawai Madhopur district, is a renowned wildlife destination spread across 392 sq. km.

The park's landscape is dominated by dry deciduous forests, with the **Dhonk tree** (*Anogeissus pendula*) being the most prevalent species, forming the largest stretch of this forest type in India.

Known for its thriving population of **Bengal tigers**, the park offers an ideal setting for spotting these majestic creatures, thanks to its dry deciduous forests and open meadows. Rich in biodiversity, Ranthambhore also boasts over 40 species of mammals and 320 species of birds.

The park's **unique blend of nature and history** includes the 10th-century **Ranthambhore Fort**, perched atop a hill, and ancient temples nestled within. This captivating mix of wildlife and historic ruins makes Ranthambhore a prime destination for both nature enthusiasts and history lovers.





# ABOUT BANDHAVGARH NATIONAL PARK

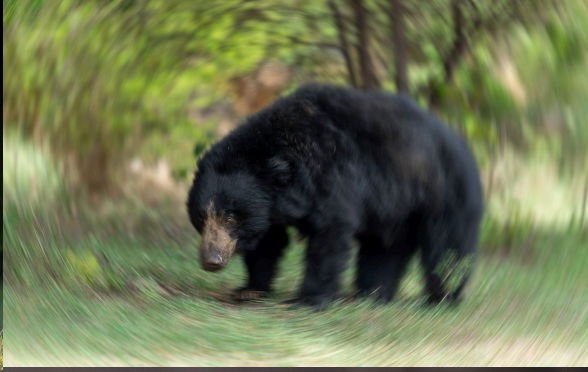
Bandhavgarh National Park, nestled in the Vindhya Hills of Madhya Pradesh, spans 105 sq. km and is known for having the **highest density of tigers** in India.

It is home to a thriving population of Bengal tigers, leopards, and various deer species. The park's diverse vegetation includes tall grasslands and thick **Sal forests**, creating an ideal habitat for wildlife.

Divided into three zones—Tala, Magdi, and Bamera—the **Tala** zone is particularly famous for tiger sightings.

The park is also home to **Sheshshaiya**, a large 65-foot reclining statue of Lord Vishnu, located near a spring. This ancient monument, surrounded by dense greenery, adds a spiritual and historical dimension to the park's natural beauty. With its mix of history and vibrant wildlife, Bandhavgarh is a top destination for nature and culture enthusiasts alike.





## Wildlife to Expect: Animals in Ranthambore and Bandhavgarh

Bengal Tiger (main attraction)

Leopard

Sloth Bear

Striped Hyena (mainly in Ranthambore)

Wild Dog (Dhole) (mainly in Bandhavgarh)

Indian Wolf (rare, mainly in Bandhavgarh)

Indian Jackal

Chital (Spotted Deer)

Nilgai (Blue Bull)

Rhesus Macaque

Small Indian Mongoose

Indian Gaur (Bison) (mainly in Bandhavgarh)

Sambar Deer

Barking Deer (mainly in Bandhavgarh)

Indian Wild Boar

Hanuman Langur

Indian Gazelle (Chinkara) (mainly in Ranthambore)

Jungle Cat



# Wildlife to Expect: Birds in Ranthambore and Bandhavgarh

## Owls:

- Indian Scops Owl
- Oriental Scops Owl
- Brown Fish Owl
- Spotted Owlet
- Mottled Wood Owl
- Jungle Owlet
- Eurasian Eagle Owl

## Raptors:

- Crested Serpent Eagle
- Indian Eagle Owl
- Shikra
- White-eyed Buzzard
- Oriental Honey Buzzard
- Black-winged Kite
- Eurasian Sparrowhawk
- Short-toed Snake Eagle

## Vibrant Birds:

- Indian Peafowl
- Indian Roller
- Asian Paradise Flycatcher
- White-throated Kingfisher
- Malabar Pied Hornbill
- Green Bee-eater
- Indian Pitta
- Plum-headed Parakeet
- Alexandrine Parakeet





## ***DAY 0***

- Land in New Delhi one day prior anytime as per your convenience. Rest and prepare for the adventure ahead.

## ***DAY 1 (RANTHAMBHORE)***

- Around 6:00/6:30 am we depart from Delhi to drive down to Ranthambhore via comfortable SUVs. The journey will be of approximately 5 hours.
- Reach Ranthambhore by noon. Check in at the hotel (Ranthambhore Regency), freshen up and gather for lunch.
- We do a brief introduction over lunch and prepare for our maiden afternoon safari.
- Embark on afternoon safari in Ranthambhore. Return to the hotel and enjoy hi-tea
- Rest, freshen up dinner and call it a night.





## ***DAY 2 TO 4 (RANTHAMBHORE)***

- **Morning & Afternoon Safaris:** Dive into the prime tiger zones of Ranthambhore, capturing majestic wildlife moments.
- Enjoy Breakfast, Lunch, Hi-Tea, and Dinner at the hotel between safaris.
- Photography sessions and hands-on practical guidance on the go

## ***DAY 5 (FINAL SAFARI & TRANSITION)***

- Final morning safari in Ranthambhore.
- Checkout around noon, post breakfast; relax at the hotel or explore the local fort, shop, or pool. Have lunch at the hotel.
- Take a train from Sawaimadhapur to Katni (Train departure time: 7:55 pm and train arrival time: 6:30 am). The drive from Regency hotel to Sawaimadhapur station is nearly 20 mins.





## ***DAY 6 (BANDHAVGARH)***

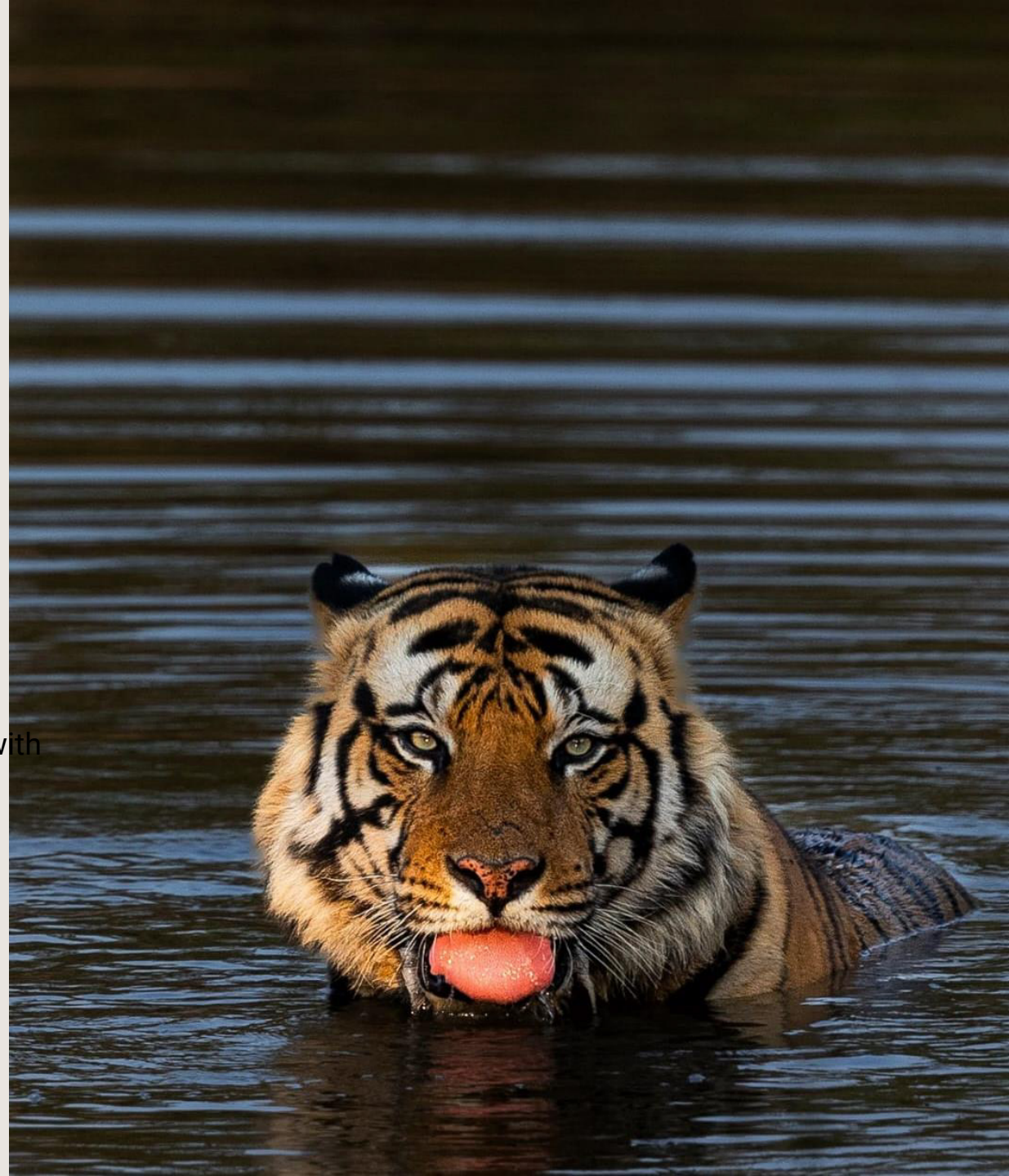
- Arrive at Katni and take a scenic drive to Bandhavgarh (approx. 2.5 hours).
- Check in at the resort and rest up for the next chapter of your tiger quest.

## ***DAY 7 TO 9 (BANDHAVGARH)***

- **Morning & Afternoon Safaris:** Immerse in the wilderness of Bandhavgarh with up-close tiger encounters.
- **Meals & Rest:** Breakfast, Lunch, Hi-Tea, and Dinner provided along with expert photography guidance.

## ***DAY 10 (BANDHAVGARH)***

- One last thrilling safari in Bandhavgarh. Checkout after breakfast.
- Depart for Jabalpur in comfortable SUVs, concluding our incredible tiger quest.





# PACKAGE VALUE & CANCELLATION POLICY

## Package value:

Option 1: USD 4200 plus GST@5% per pax (with choice guide and driver)

Option 2: USD 3900 plus GST@5% per pax (with choice guide but without choice driver)

## Cancellation Policy:

Cancellation makes	Cancellation charges
At any time after booking	20% of total package value
45 days before date of trip	50% of total package value
Between 45 and 20 days before date of trip	70% of total package value
Less than 20 days before date of trip or no show	100% of total package value

You can adjust 80% of the cancellation fee towards a future trip with us, or transfer it to someone else who can travel during the original trip dates. This adjustment is subject to permit availability for the ongoing trip.

#Since safari permits once booked are non-transferable and non-refundable. This is sadly not under our control as its the forest departments rule in India and hence the strict cancellation policy.





# ***TOUR INCLUSIONS***

- **No. of participants:** 6 participants plus Pradeep.
- **No. of safaris:** 15 to 16 (8 in Ranthambhore and 7/8 in Bandhavgarh)
- **Accommodation:** Stay for 4 Nights each in Ranthambhore and Bandhavgarh.  
Total 4 rooms – 3 rooms for participants on twin sharing. Pradeep ji - complimentary on room sharing with Kapil/ Neeraj
- **Meals:** All meals as per itinerary from lunch of day 1 to breakfast of day 10
- **Transfers:** Gate transfers. All internal transportation from Delhi to Ranthambhore, Ranthambhore to Sawaimadhapur station, Katni to Bandhavgarh and back to Jabalpur airport.
- **Train travel:** From Sawaimadhapur to Katni in a comfortable AC (first tier) coach
- **Entry fee:** All safari permits and parks entry fee
- Fort visit in Rathambhore on request



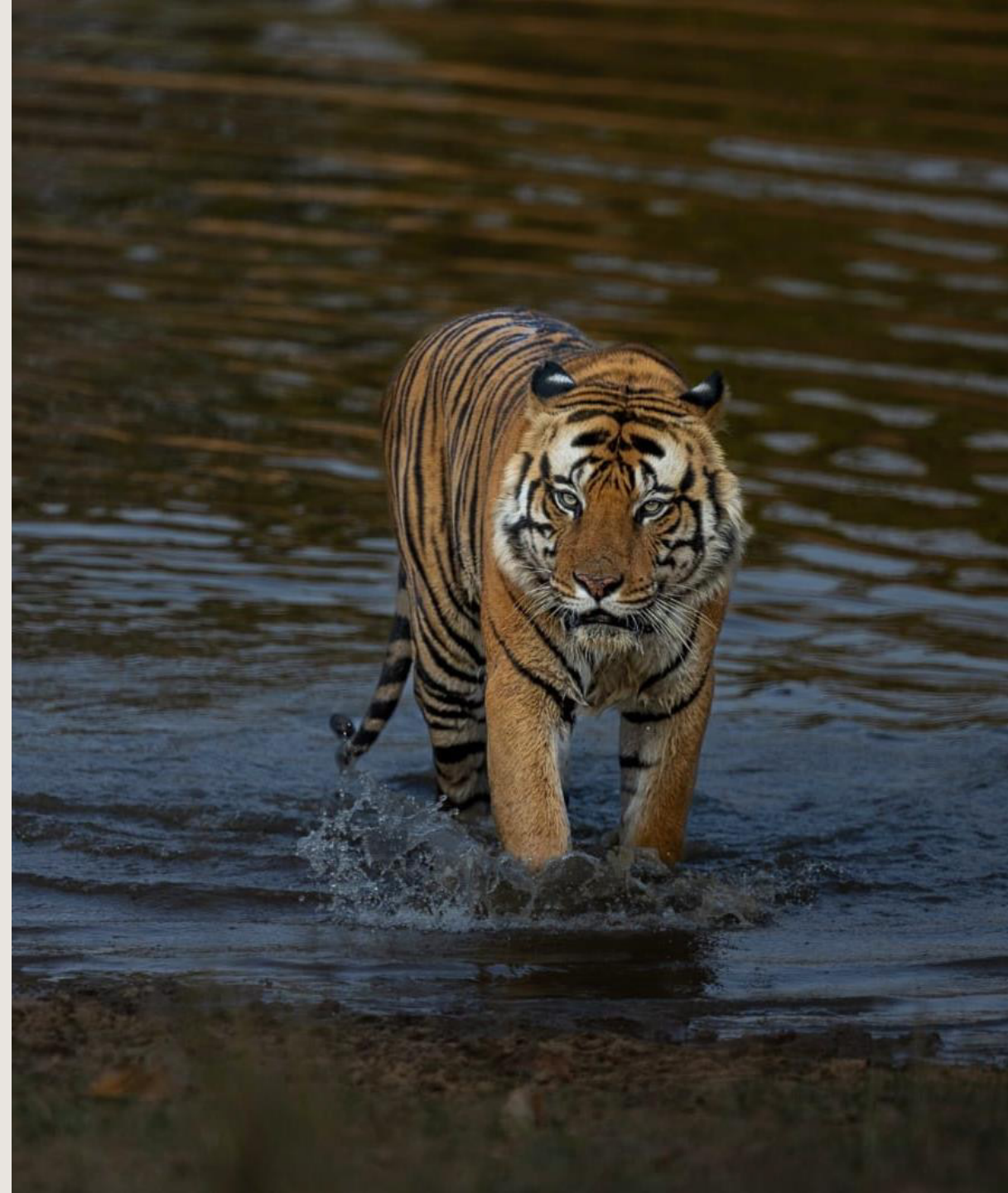


# ***TOUR EXCLUSIONS***

- Your travel up to Delhi and from Jabalpur.
- Any extra F&B, laundry charges, drinks of personal nature, etc.
- Tips and gratuities to the drivers/guides/staff
- Anything else not included in the 'INCLUSIONS' section of the itinerary.

## **Additional services**

- Two participants per jeep option available with extra cost
- Single occupancy room facility available with extra cost
- Exclusive Leopard Safari and Jaipur (Pink City) tour facility available with extra cost.
- Two days Herping and Macro Opportunity available with extra cost





# ***Recommended Gear***

- 100-400mm for versatile range and distant subjects
- 400mm Prime for sharper, distant shots
- 70-200mm for closer wildlife encounters
- 1.4x Teleconverter (TC) to extend your focal length for distant animals

It is recommended to carry two camera bodies along with two lenses. This ensures you don't need to switch lenses and risk missing a crucial shot. It also protects your gear from dust, which is common in these environments.

# ***Essential Clothing and Accessories***

## **Light, Breathable Fabrics**

**Cotton or Linen:** Wear light-colored, breathable fabrics like cotton or linen to keep cool and protect yourself from the sun.

**Moisture-wicking materials:** Quick-drying fabrics are helpful in case you sweat more.

## **Protection from Sun and Insects**

Lightweight, long-sleeved shirts and pants are ideal for protecting your skin from the harsh sun, insect bites, and thorny vegetation. Even if it's hot, long sleeves are often cooler than exposed skin in direct sunlight.

**Buff or Scarf** Protection from Dust: A light scarf or buff can protect your face and neck from the dust, which can kick up during your safari drives.

**Rain Protection (Optional)** Light Poncho or Waterproof Jacket: Though June is generally dry, you might encounter occasional rain, so a packable rain poncho could be useful.

**Accessories to Consider:** Sunscreen, Insect Repellent, Hat, and Sunglasses

